



# High Performance OASIS<sup>TM</sup> Wet Seal Centrifugal Pump

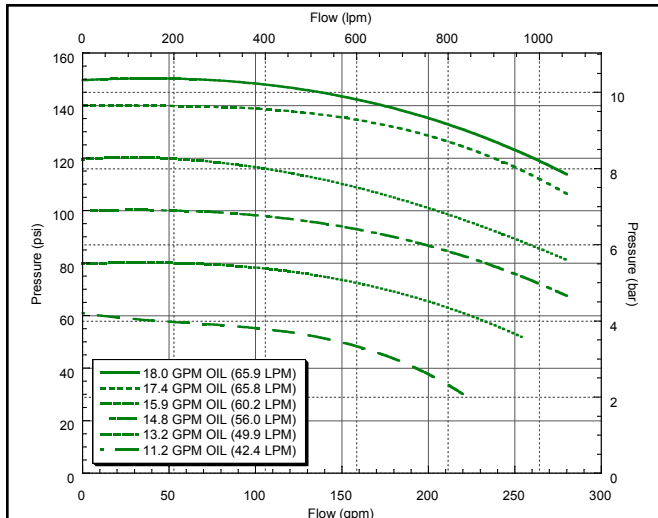


## FMC-750F-HYD

- Suction 300 Series Flange
- Discharge 220 Series Flange
- High Performance Pump
  - Maximum Flow 290 GPM (1098 LPM)
  - Maximum Pressure 150 PSI (10.3 BAR)
- WetSeal Technology
  - Prevents Run Dry Failures
  - Isolates Seals from Chemicals and Fertilizers
- Maximum Reliability
  - Operates at Lower RPM
  - Oversized Bearings
  - E-coat Corrosion Protection
  - High Efficiency 4000 PSI (275 BAR) Pressure Plated Gear Motor
  - Optional Case Drain Available

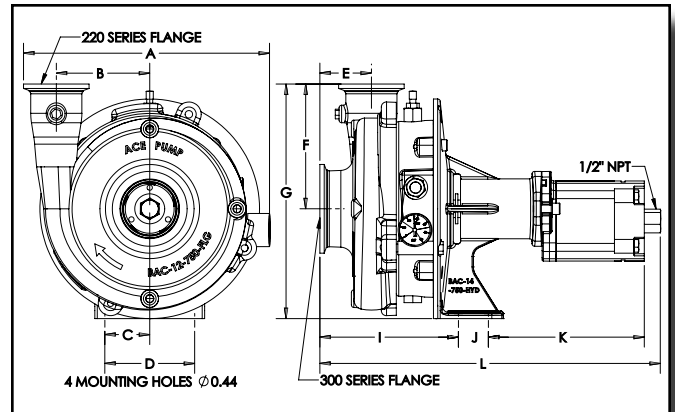


### PERFORMANCE CHART



Note: Performance for pump with M22 motor.

### DIMENSIONS

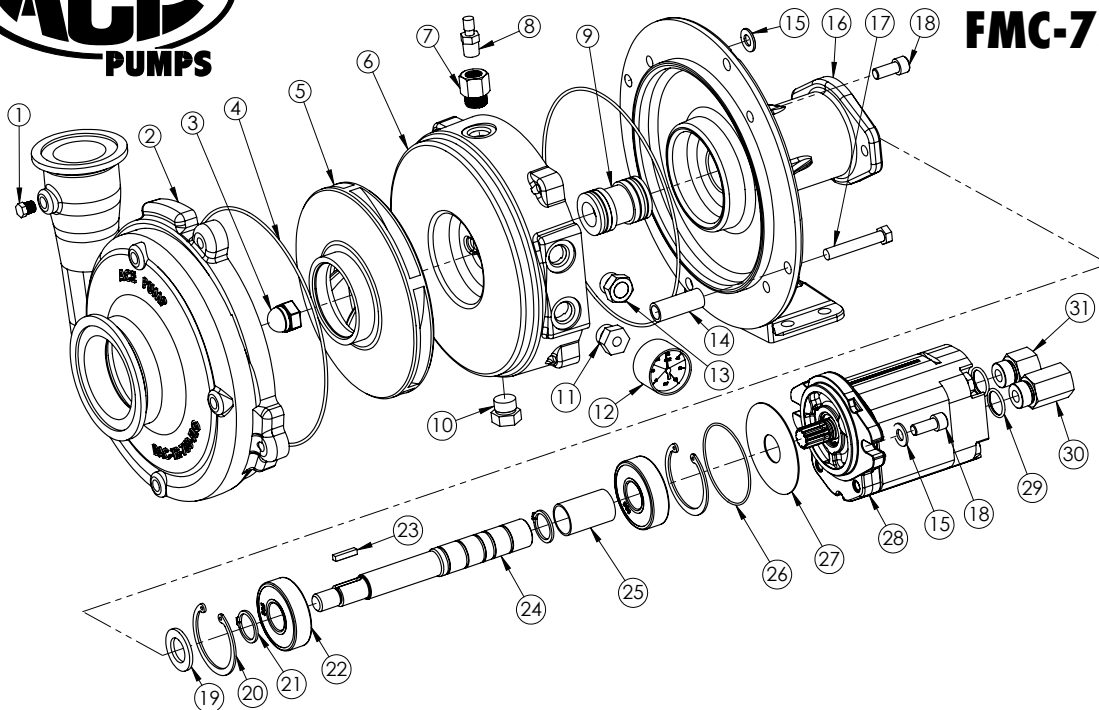


|        | A     | B     | C    | D     | E    | F     | G     | I     | J    | K     | L     |
|--------|-------|-------|------|-------|------|-------|-------|-------|------|-------|-------|
| INCHES | 12.06 | 4.69  | 2.25 | 4.50  | 2.59 | 6.25  | 11.75 | 6.88  | 1.50 | 8.31  | 18.19 |
| MM     | 306.3 | 119.1 | 57.2 | 114.3 | 65.8 | 158.8 | 298.5 | 174.8 | 38.1 | 211.1 | 462.0 |

Note: Dimensions for pump with M25 motor.



# FMC-750F-HYD



| REF. #            | PART NUMBER         | EDP # | DESCRIPTION  | REQ. |
|-------------------|---------------------|-------|--|------|
| 1                 | BAC-53              | 41110 | Pipe plug, 1/8" NPT  | 4    |
| 2                 | BAC-12-750-FLG      | 30158 | Volute, 300 X 220 flange, cast iron, e-coated                  | 1    |
| 3                 | 40397               | 40397 | Acorn nut, 5/8"-11 stainless steel                             | 1    |
| 4 <sup>①</sup>    | ACAL-4              | 30009 | O-ring, volute seal  | 2    |
| 5                 | BAC-26-750-CI       | 30182 | Impeller, cast iron, e-coated                                  | 1    |
| 5                 | BAC-26-750-SS       | 30189 | Impeller, 316 stainless steel (optional)                       | 1    |
| 6                 | BAC-16-750          | 45264 | Seal plate, cast iron, e-coated                                | 1    |
| 7                 | 41107               | 41107 | Plug, #8 SAE X 1/4" FNPT, hex head, with o-ring                | 1    |
| 8                 | 41316               | 41316 | Air valve, 1/4" NPT  | 1    |
| 9 <sup>①</sup>    | BAC-7-750V          | 40147 | Dual seal assembly, Type 21, .875 shaft                        | 1    |
| 10                | 41108               | 41108 | Plug, SAE #8, hex head, with o-ring                            | 1    |
| 11                | 44039               | 44039 | Bushing, #8 SAE x 1/8" FNPT                                    | 1    |
| 11                | 44038               | 44038 | Bushing, 1/2" MNPT x 1/8" FNPT (prior to 11/11)                | 1    |
| 12                | 50150               | 50150 | Pressure gauge, 0-60 PSI, 1/8" NPT                             | 1    |
| 13                | 55851               | 55851 | Site gauge, #8 SAE, steel                                      | 1    |
| 13                | 55850               | 55850 | Site gauge, brass 1/2" NPT                                     | 1    |
| 14                | 45267               | 45267 | Spacer, seal plate   | 4    |
| 15                | 42701               | 42701 | Washer, 3/8", volute and motor mount                           | 3    |
| 16                | BAC-14-750-HYD      | 40333 | Mounting frame, cast iron, e-coated                            | 1    |
| 17                | 40952               | 40952 | Cap screw, 3/8" NC x 2-1/2", hex head (volute)                 | 4    |
| 18                | 41907               | 41907 | Cap screw, 3/8" NC x 1", socket head (seal plate, motor mount) | 4    |
| 19                | BAC-54-650          | 41132 | Slinger, 7/8" shaft  | 1    |
| 20                | 41943               | 41943 | Snap ring, internal, frame                                     | 2    |
| 21                | ACAL-32             | 30174 | Snap ring, external, shaft                                     | 2    |
| 22                | 40875               | 40875 | Ball bearing, sealed   | 2    |
| 23                | 41085               | 41085 | Key, .188 x .188 x .875  | 1    |
| 24                | BAC-6-750-HYD-SS-WS | 40066 | Shaft, 11T female spline, stainless steel                      | 1    |
| 25                | BAC-32-750          | 40793 | Spacer, shaft  | 1    |
| 26                | 43419               | 43419 | O-ring, flange, M Series motor (effective 6/15)                | 1    |
| 27                | 43414               | 43414 | Pad, absorbent, M Series motor (effective 6/15)                | 1    |
| 28                | BAC-75-HYD-M22      | 41355 | Hydraulic motor, pressure plated gear type, 18 GPM             | 1    |
| 28                | BAC-75-HYD-M25      | 41356 | Hydraulic motor, pressure plated gear type, 20 GPM             | 1    |
| 29                | 41445               | 41445 | O-ring, #10 SAE fitting  | 2    |
| 30                | BAC-78-10SAE        | 41442 | Reverse check, #10 SAE male x 1/2" NPT female                  | 1    |
| 31                | BAC-80-10SAE        | 41446 | Body, adapter/restrictor, #10 SAE male x 1/2" NPT female       | 1    |
| * 32 <sup>①</sup> | 55032               | 55032 | Barrier fluid, Royal Purple, quart                             | 1.32 |
| ①                 | RK-FMC-750          | 52724 | Repair kit, includes items 4 (2 pcs.), 9, and 32 (2 qts.)      | --   |

\* - not shown in parts diagram