

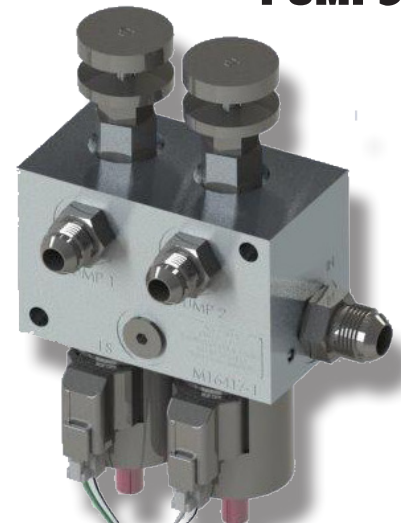
Gemini

by



Ace Part #DPK includes:

- Switch Box Assembly
- Implement Wire Harness
- Valve Manifold
- Hydraulic return tee & adapter for Load Sense (LS) port



Accessory:

- DPK-EXT - Optional 22' long implement extension cable

Features:

- Operate two pumps independently
- Supply oil from one tractor remote or power beyond circuit
- Use on tractors with Load Sensing (LS) or Pressure Compensated (PC) hydraulic systems
- Two modes of operation:
 - Manual mode - independent on/off operation from the cab with independent manual flow adjustment at the hydraulic manifold
 - PWM mode - independent pump regulation with PWM signal from controller (not included)

Operates any combination of Ace Pumps equipped with the 204 or 206 motor

Pump Models	FMC-75-HYD-204 FMC-75-HYD-206	FMC-HYD-204 FMC-HYD-206	FMC-150-HYD-206	FMC-150F-HYD-206 FMC-150FS-HYD-206
Choose any two depending on application requirements!				
Material	Polypropylene	Cast Iron	Cast Iron	Cast Iron or Stainless Steel
Max. Flow	25 gpm	85 gpm	135 gpm	145 gpm
Max. Pressure	100 psi	100 psi	120 psi	120 psi