



High Performance Magnetic Clutch Driven Centrifugal Pump



FMC-CW-800-MAG

- Suction 2" Discharge 1-1/2"
- Larger diameter impeller allows higher pressures at slower speeds
- Equipped with heavy duty 12 volt DC magnetic clutch
- Easily replaceable mechanical seal cartridge
- Standard Viton® Carbon/Ceramic seal or Optional Severe Duty Silicon Carbide Mechanical Seal
- Heavy duty double row ball bearings
- Clockwise Rotation when facing shaft
- All iron construction

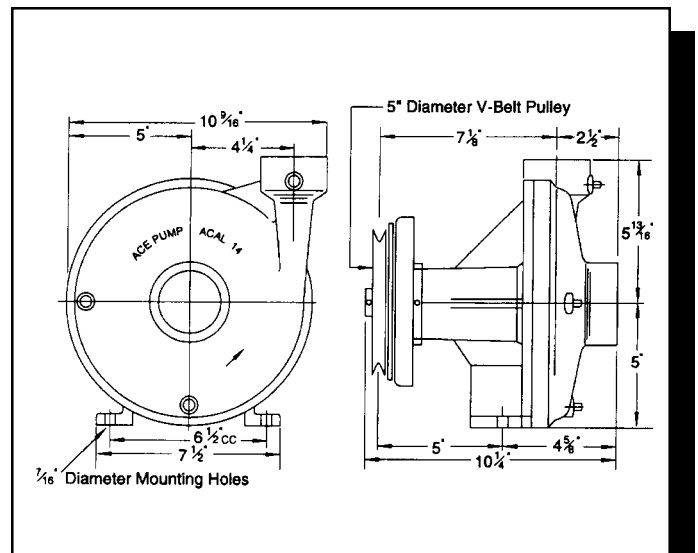
PERFORMANCE CHART

PUMP SHAFT SPEED	20	40	60	80	100	120	140	160	MAX HP
	PSI	PSI	PSI	PSI	PSI	PSI	PSI	PSI	
	GPM	GPM	GPM	GPM	GPM	GPM	GPM	GPM	
3200 RPM	160	150	130	80	10	-	-	-	6.5
3600 RPM	180	180	150	120	60	40	-	-	8.0
3800 RPM	180	180	175	150	120	80	30	-	10.0
4000 RPM	180	180	180	170	150	100	70	-	12.5
4200 RPM	180	180	180	180	170	140	100	50	14.2

$$\frac{\text{Pump RPM}}{\text{Driveshaft RPM}} = \frac{\text{Drive Pulley Diameter}}{\text{Pump Pulley Diameter}}$$

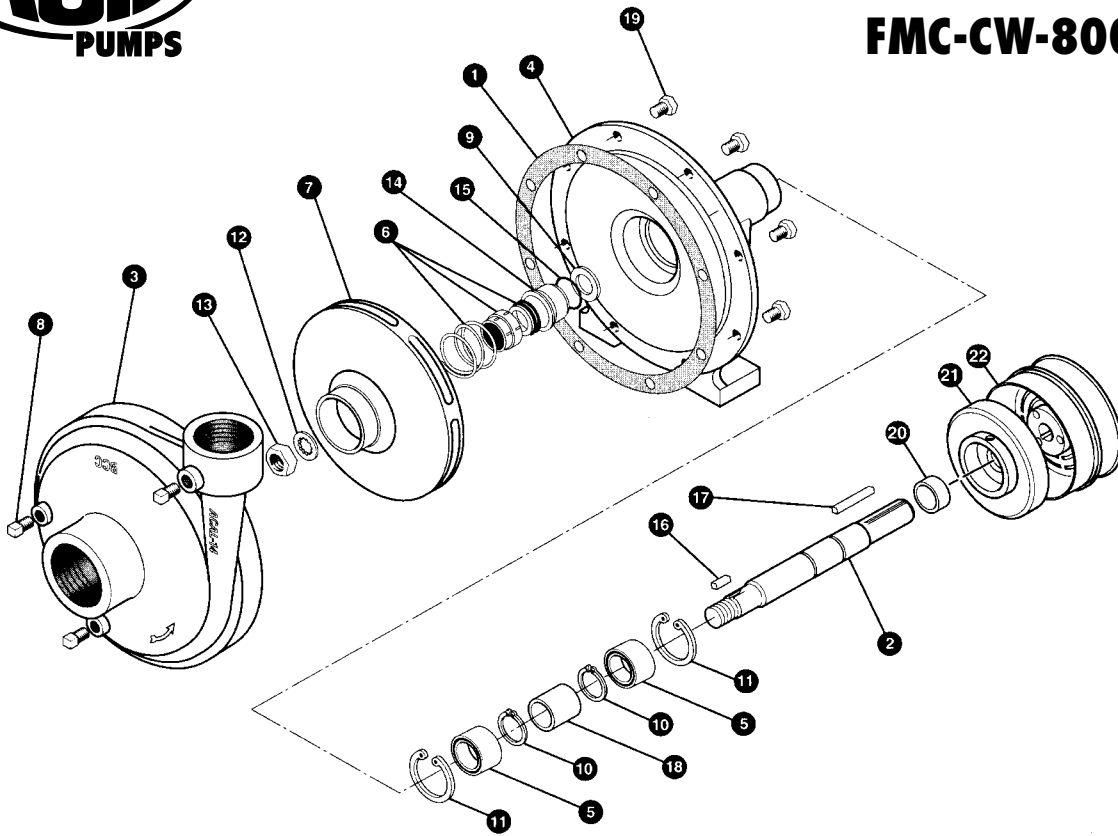
Viton® is a registered trademark of DuPont Dow Elastomers.

DIMENSIONS





FMC-CW-800-MAG



REF. #	PART NO.	EDP NO.	DESCRIPTION	REQ.
1*	ACAL-4	30009	"O" ring for ACAL-14 volute seal	1
1	9000	31130	Gasket, 8 holes	1
2	ACAL-6-SS-A	30017	Shaft, stainless steel	1
3	ACAL-14	30160	Volute, 2" x 1-1/2"	1
4	ACAL-15-MAG	30166	Mounting frame, machined to accept magnetic clutch	1
5	ACAL-37-DRB	30179	Bearing, double row	2
6*	TYPE 21-984	30255	Seal, .984" Type 21	1
6	TYPE 21-984-SC	30256	Seal, .984" Type 21, silicon carbide (optional)	1
7	ACAL-26-75	30555	Impeller with keyway, 8" diameter	1
8	BAC-53	41110	Pipe plug, 1/8" NPT	3
8	41120	41120	Pipe plug, 1/8" NPT, stainless steel (optional)	3
9	GE-54	42220	Slinger	1
10	ACAL-32	30174	Snap ring, external	2
11	BACG-33	45165	Snap ring, internal	2
12	BACG-44-A	45191	Lockwasher, 9/16" ID, stainless steel	1
13	45195	45195	Nut, 9/16" - 18, stainless steel	1
14	BACG-90M	45270	Seal cartridge for mechanical seal	1
15*	73010	73010	"O" Ring for seal cartridge	1
16	41079	41079	Key for impeller, 3/16" x 3/16" x 1/2"	1
17	BAC-50	41080	Key for shaft, 3/16" x 3/16" x 1-1/4"	1
18	ACAL-32-S-A	30176	Spacer for ACAL-6 Shaft	1
19	40950	40950	Cap screw, 3/8" NC x 3/4" hex head	8
20	41489	41489	Spacer, magnetic clutch	1
21	41487	41487	Coil ring, 12 volt DC activated	1
22	41486	41486	5" Pulley assembly with bearing and clutch driver	1
#	41485	41485	Clutch assembly, heavy duty clutch rated at 30 ft-lbs torque, complete with pulley, clutch driver, coil ring, and spacer.	1
#	RK-FMC-CW-800	52715	Repair kit for FMC-CW-800-MAG pump	1

* Items included in pump repair kit.

Ace Pump Corporation • P.O. Box 13187 - 1650 Channel Avenue • Memphis, TN 38113
www.AcePumps.com • Phone: 901-948-8514 • Fax: 901-774-6147

Ace Form FMC-CW-800-MAG
 Revised 5/01